

## Medical Records Filing for Lloyd George or A4

Railey Projects Ltd  
(formerly Railex Projects)  
1 Curtain Road,  
London EC2A 3JX.

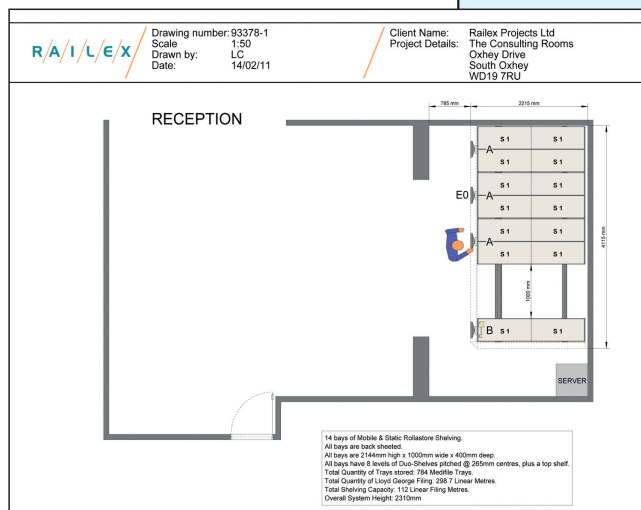
Contact: Michael Church  
Mobile: 07711 139971  
Email: michael@raileyprojects.co.uk

Or: Colin Gavin  
Mobile: 07711 139972  
Email: colin@raileyprojects.co.uk

[www.raileyprojects.co.uk](http://www.raileyprojects.co.uk)

# Railex projects their appeal

If someone came up to you and said we can reconfigure your patients records section so that it takes up only 25% of the existing space yet will be secure and easier to access you would probably think they had been in the sun too long (which would not be healthy anyway of course) – yet this is precisely what Railex Projects have achieved for Practice Manager Paul Drinkwater at the Consulting Rooms in South Oxhey near Watford.



Newly arrived at the surgery, Paul is on a mission to improve the look and performance of the practice for staff and patients alike given the highly varied needs of the rapidly increasing local community. The original records layout was simply based on a main open plan office with open shelving units which didn't really meet any of the core criteria – especially with the requirements of the Care Quality Commission (CQC) looming on the horizon.

Knowing from his previous position that Railex Projects are the niche experts in this sector, Paul turned to them for their noted guidance and planning. All of which has resulted in the installation of a Rollastore steel mobile storage system. This unit features tracks laid in to a relocatable floor and overall measures just 4115mm long

by 2215m wide and is now discreetly housed in a dedicated area at one end of the room. All of the 10000 records are neatly accommodated in

just 696 special lightweight Medifile trays – with expansion scope for another 88 trays. Each Rollastore bay has eight storage levels of Lloyd George medical records. The system simply opens or closes at the light turn of the wheel and when the system is not in use it can all be closed up and locked. All very neat on the eye in Oyster White – which is one of numerous tasteful standard colours.

As Paul Drinkwater observes “ The Railex technology is a key aspect of our exciting refurbishment programme. This will also embrace a secretarial suite, special nurses rooms and a modernised exterior which will all convey a new image and a sense of welcome and confidence to all concerned. The new records concept creates a much tidier and cleaner environment and the enhanced organisational aspect means that we are much more organised and productive. I am very pleased with the new investment”.

The Consulting Room System



The A4 Option